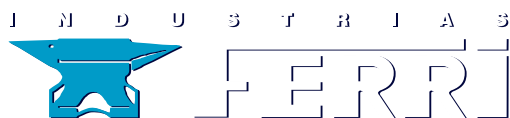




**INDUSTRIAS FERRI** is a company with nearly half a century of history, specialized in the design and manufacture of equipment, systems and machinery.

Our origins and principal activity have been in vessel on- deck equipment, an activity that was broadened to include drilling equipment for the mining of ornamental rocks. At a later stage, industrial equipment was added. All of the above related to special activities in the handling of loads for civil engineering and energy industries.

At present, in addition to these activities, we also develop technical assistance and maintenance services for highly specialized mechanical and industrial sectors.





# vision-mission



## Our vision:

- Sustainable development requires specialized machinery and technical services that can responsibly and efficiently take on the diversity of contemporary technical challenges.
- Technical advances and the optimization of resources require experts who are able to comprehend the client's specific needs and problems in order to develop customized equipment and services that will satisfy the client's every demand.
- With total respect for the environment, INDUSTRIAS FERRI will continue to contribute improvements and innovation to the development of machinery and services.
- Our vision is focused on the absolute satisfaction of our clients by searching for the most innovative and reliable technical solutions.

## Our mission:

- We work to deliver equipment and services which we custom develop to resolve our clients' specific needs.
- We tackle successfully and with economic solvency the development of projects which are delivered on time, according to specification and within budget.
- We take on projects which we can be proud of and that earn our clients' recognition.
- In all our activities, we defend our business solidity, seriousness, and efficiency.
- We keep to the highest standards of industrial, labour, commercial, and environmental ethics and responsibility.
- We improve by applying our knowledge and experience to all our products.





# quarrying machines

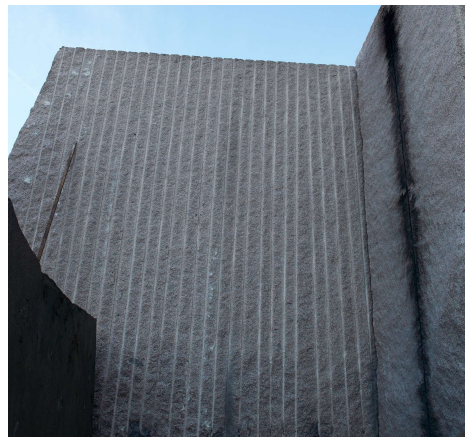


The wide ranging experience acquired by INDUSTRIAS FERRI in the design and manufacture of naval equipment since the year 1965, enabled us to engage in the design and manufacture of drilling rigs for quarries with great success as from 1985.

Our drilling rigs for hydraulic rock drills currently enjoy the confidence of the main quarrying operations in Spain, Portugal, Angola, India, Brasil, Venezuela, Zimbabwe, Mozambique, because of their high productivity low cost in the consumption of diesel fuel, drill steels and maintenance per drilled metre.

Our spare parts warehouse, with its immediate delivery and the fast response of our technical assistance service guarantees that a quarry obtains the maximum performance of our drilling equipment, together with fast amortisation.

We guarantee any spare part in 24 hours. Our service is 24/7.





# hydraulic drilling rig F 3 H



Drills three bore holes at the same time of up to 2.20 m in depth, automatically regulated, perfectly aligned along a length of 4.14 m between bore hole ends. Up to 9 m in depth with drill steel change. Three hydraulic rock drills for integral 7/8 drill steels, 32 mm Diam. Drilling speed of 1 m/min in granite, 2 m/min in marble.

Average drilling rate of 810 m/day with less than 160 litres of diesel fuel.

Controlled either from the machine's cabin or remote radio control. Fully automatic anti-jamming function and automatic reset. Control and recording of daily production and accumulated totals.

Pressurised water flushing of bore holes, with a consumption of 15 l/minute.

3,800-litre water tank and pump are coupled to the vehicle.

Optional air flushing with dust retainer.

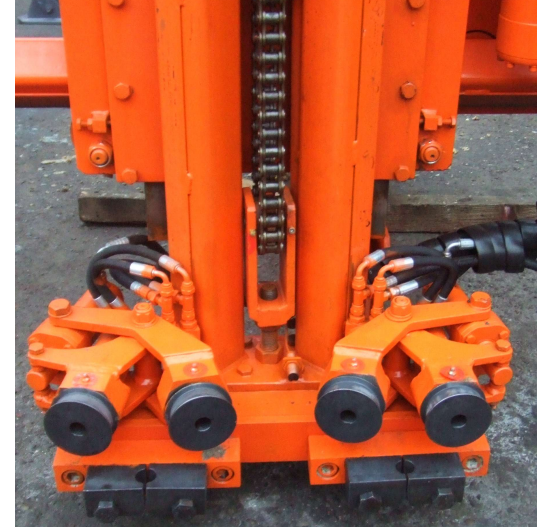
Can be installed on excavators with a minimum weight of 21 tons.







# hydraulic drilling rig F 2 H



Drills two bore holes at the same time of up to 2.20 m in depth, automatically regulated, perfectly aligned along a length of 3.6 m between bore hole ends, up to 9 m in depth with drill steel change. Two Hydraulic rock drills for integral 7/8 drill steels, 32 mm Diam. Drilling speed of 1 m/min in granite, 2 m/min in marble.

Average drilling rate of 550 m/day with less than 140 litres of diesel fuel.

Controlled either from the machine's cabin or remote radio control. Fully automatic anti-jamming function and automatic reset. Control and recording of daily production and accumulated totals.

Pressurised water flushing of bore holes, with a consumption of 10 l/minute.

3,000-litre tank and pump are coupled to the vehicle.

Optional air flushing with dust retainer .

Can be installed on excavators with a minimum weight of 19 tons.





# hydraulic drilling rig F 1 H



Drills one bore hole of up to 2.20 m in depth, end-of-travel regulated, and can produce a perfectly aligned line of bore holes with a length of 3.35 m between bore hole ends.

One hydraulic rock drill for integral 7/8 drill steels, 32 mm Diam. Drilling speed of 1 m/min in granite, 2 m/min in marble. Average drilling rate of 250 m/day with less than 120 litres of diesel fuel.

Fixed manual controls. Optional portable control.

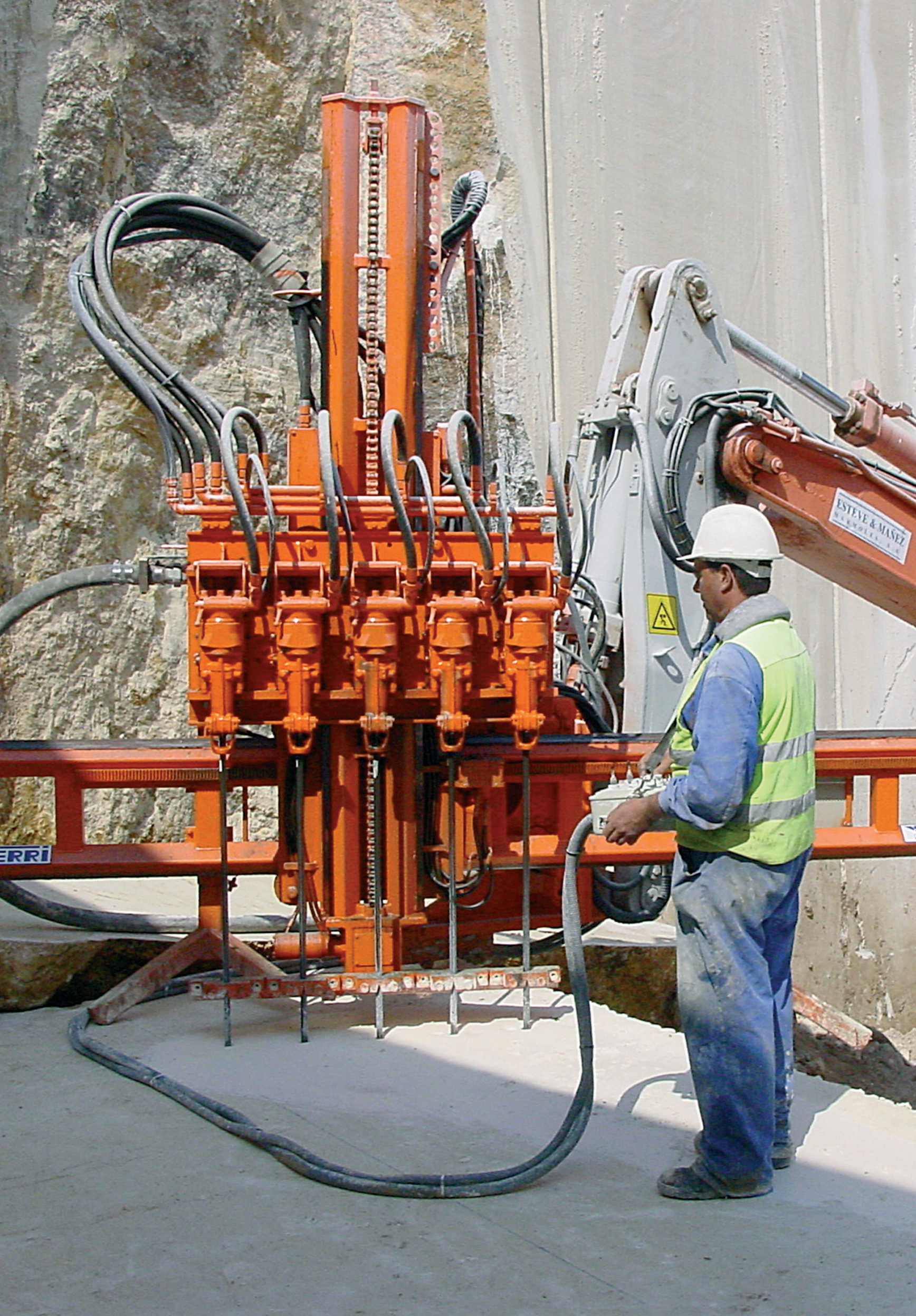
Pressurised water flushing of bore holes, with a consumption of 5 l/min.

2000-litre tank and pump are coupled to the vehicle.

Optional air flushing with dust retainer.

Can be installed on excavators with a minimum weight of 10 tons and 80 hp.





# pneumatic drilling rig F5N



Drills five bore holes at the same time of up to 2.20 m in depth, automatically regulated, perfectly aligned along a length of 4.4 m between bore hole ends, up to 9 m in depth with drill steel change. Five 29-kilo pneumatic rock drill for integral 7/8 drill steels, 32 mm Diam.

Drilling speed of 0.75 m/min. In granite, 1.5 m/min in marble.

Average drilling rate of 750 m/day in granite.

Controlled either from the machine's cabin or portable push-button control. Optional radio control of the quarrying machine and the excavator.

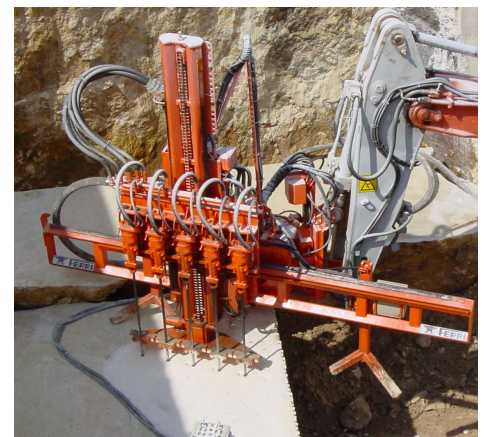
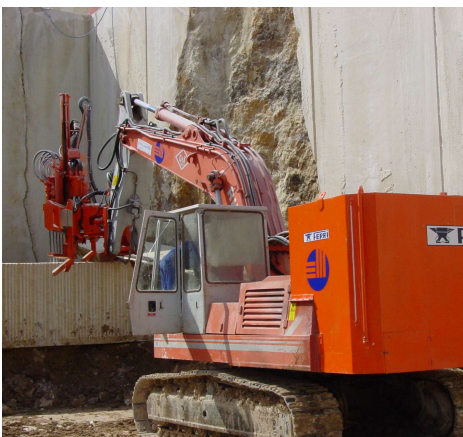
Pressurised water flushing of bore holes, with a consumption of 20 litres/minute.

4,000-litre tank and pump are coupled to the vehicle.

Optional air flushing with dust retainer.

The compressed air for the operation of the drilling rig (25 m<sup>3</sup> at 6 bar), will be provided by external compressor.

Can be installed on excavators with a minimum weight of 18 tons.





# pneumatic drilling rig F4N



Drills four bore holes at the same time of up to 2.20 m in depth, automatically regulated, perfectly aligned along a length of 4.14 m between bore hole ends, up to 9 m in depth with drill steel change. Four 29-kilo pneumatic rock drills for integral 7/8 drill steels, 32 mm Diam.

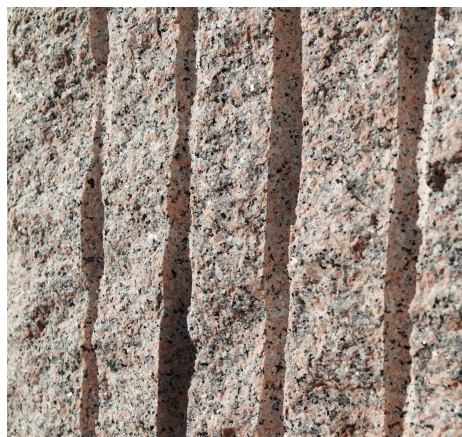
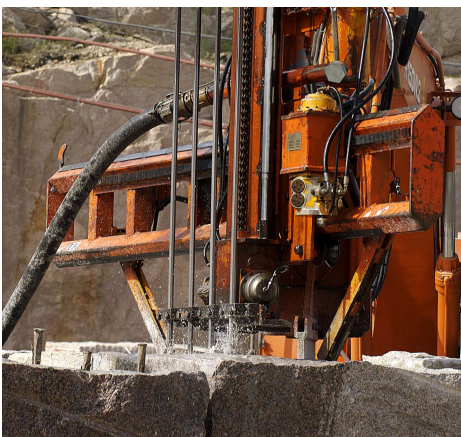
Drilling speed of 0.75 m/min. In granite, 1.5 m/min in marble. Average drilling rate of 600 m/day in granite.

Controlled either from the machine's cabin or portable push-button control. Optional radio control of the rig and the excavator. Pressurised water flushing of bore holes, with a consumption of 16 l/min.

3,800-litre tank and pump are coupled to the vehicle. Optional air flushing with dust retainer.

The compressed air for the operation of the drilling rig (20 m<sup>3</sup> at 6 bar), will be provided by external compressor.

Can be installed on excavators with a minimum weight of 17 tons



# pneumatic drilling rig F2N



Drills two bore holes at the same time of up to 2.20 m in depth, end-of-travel regulated, perf in depth with drill steel change. Drilling speed of 0.5 m/min in granite, 1 m/min in marble. Average drilling rate of 250 m/day in granite.

Two 24 kg pneumatic rock drills for integral 7/8 drill steels, 32 mm Diam.

Fixed manual controls. Optional remote control.

Pressurised water flushing of bore holes, with a consumption of 7 l/min.

2,000-litre tank and pump are coupled to the vehicle. Optional air flushing with dust retainer.

The compressed air for the operation of the machine (7 m<sup>3</sup> at 6 bar), will be provided by external compressor.

They can be installed on excavators with a minimum weight of 10 tons.

